

CDM7180

额定功率(Rated Power): 132kW@2200rpm

操作重量(Operating Weight): 15200Kg (Standard)



Motor Grader
平地机



- Equipped with Dong Feng Cummins engine.
- Single-handle electro-hydraulic controlled power shift T/M, 6 forward & 3 reverse shifts makes operation easy and convenient.
- Optimum axle load allocation provides excellent stability while grading rough and rocky area.
- Box-Type frame and advanced T/M enable it to complete heavy-duty work.
- A wide working range is accomplished through flexible moldboard suspension system and articulated frame.
- 采用东风康明斯发动机。
- 单手柄电液控制动力换挡变速箱，6个前进档和3个倒退档，操作简单方便。
- 优化驱动桥载荷分配，为粗糙岩石作业工况提供卓越稳定性。
- 箱式框架和先进的变速箱使其能够完成重载作业。
- 可调节刀板悬挂系统和铰接式车架实现了广泛的作业范围。



Wheel Loader
轮式装载机



Excavator
履带式挖掘机



Road Roller
压路机



Skid Steer Loader
滑移装载机



发动机(Engine)

型号.....康明斯6BTA5.9
Model.....Cummins 6BTA5.9
型式.....直喷、涡轮增压、水冷
Type.....Dircet injection, turbocharged, water cooling
额定功率Rated Power..... 132kW@2200rpm
最大扭矩Max. touque.....750N.m@1300rpm



变速系统 (Transmission System)

ZF技术的电液控制动力换挡变速箱, 单手柄操作, 中位锁定。
Electro-hydraulic controlled power shift ADVANCE transmission adopted ZF technology, single handle operation, lock in the neutral.
行驶速度(km/h) Traveling speed (at rated engine rpm)

Gearshift	Forward speed	Reverse speed
1 st	5.3	5.3
2 nd	8.5	12
3 rd	12	25
4 th	28.6	
5 th	25	
6 th	37	



液压系统 (Hydraulic System)

系统压力System pressure.....17.5mpa
发动机额定转速时的流量.....99L/min
Flow rate at engine rated speed.....99L/min



转向 (Steering System)

前轮的最大转向角.....左右各 49°
Max. turning range.....left or right 49°
车架转向角.....左右各 26°
Frame articulation.....left or right 26°
最小转弯半径.....7300mm
Min. turning radius.....7300mm
系统压力 System pressure.....16mpa
发动机额定转速时的流量..... 55L/min
Flow rate at engine rated speed..... 55L/min



车桥 (Axles)

前桥.....中央离地间隙 610mm, 摆角为±16°
Front axle.....Ground clearance 610mm and oscillation angle (total)±16°
前轮倾斜角 wheel lean angle.....right or left 17°
后桥: 全浮式后桥, 带 NO-SPIN 差速器
Rear axle: full-floating rear axle with NO-SPIN differential



终传动 (Tandem Drive)

平衡摆角 (Tandem oscillation).....13° forward and reverse
终传动.....螺旋锥齿轮, 单级减速。
Final driving.....Spiral bevel gear, single stage reduction
串联传动.....采用双排滚子链
Tandem drive.....Double row roller-chains



制动 (Brakes)

行车制动.....钳盘式制动器
Service brake.....Hydraulic brake system, disk brake
停车制动.....软轴操纵作用内涨鼓式制动器。
Parking brake.....Flexible shaft control actuated inner-expanding drum brake



铲刀 (Moldboard)

铲刀尺寸 Dimensions.....3966mm × 560mm × 20mm



刀板变动范围 (Blade Range)

铲刀移动距离(Moldboard side shift)
Right.....965mm
Left.....965mm
Max. shoulder reach outside rear tires(frame straight)
Right.....2000mm
Left.....1970mm
Max. lift above ground.....450mm
Max. grading depth.....535mm
Max. blade angle, right or left.....90°
Blade tip angle.....29° ~ 77°



轮胎 (Tyre)

轮胎规格 Tyre size.....17.5-25-12PR L-3



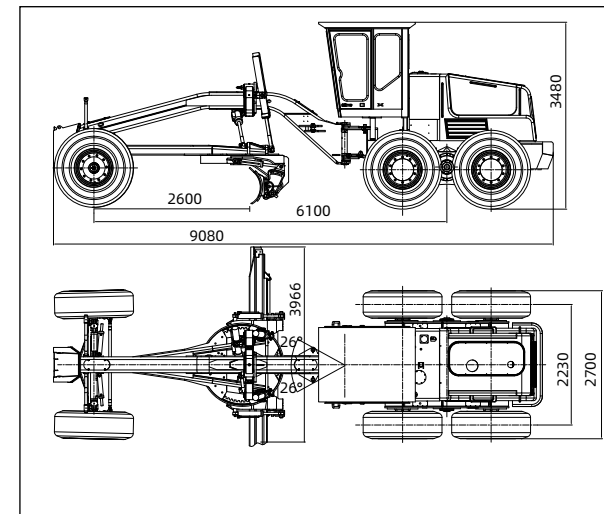
驾驶室 (Cabin)

低噪音减振驾驶室, 可调节转向座椅, 配备空调, 流线型仪表盘, 操作舒适, 视野开阔。
Vibration-absorbed humanistic cabin with adjustable steering wheel and seat, and streamline dashboard provide low noise, air conditioning, comfortable operation and wide eyeshot.



油量 (Refill Capacity)

燃油箱 Fuel tank.....370L
变速箱 Transmission.....28L
曲轴箱 Crank case.....17L
后桥 Rear axle.....18L
平衡箱(单边) Tandem housing(each).....45L
液压系统 Hydraulic system.....65L

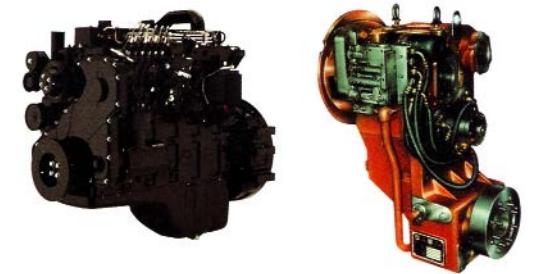


舒适驾驶室 Comfortable Cabin



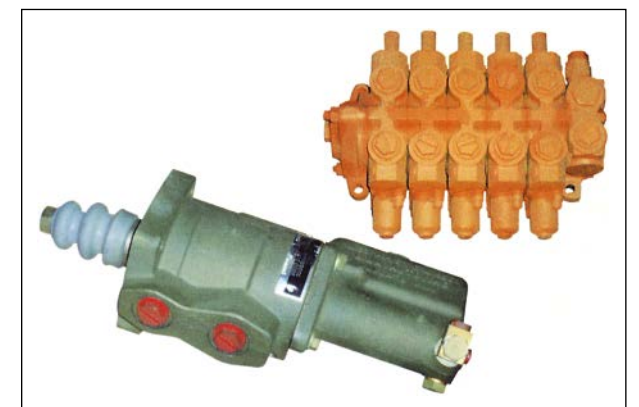
- Full-closed cabin with the visibility up to 47%.
- 全封闭驾驶室, 可视范围达47%。

传动最佳匹配 Best Matched Power Train



- Equipped with Cummins engine that features strong power and low oil consumption. 配备康明斯发动机, 动力强, 油耗低。
- ADVANCE transmission adopted ZF technology with singlehandle that features perfect performance and easy operation. 配备采埃孚技术的单手柄控制杭齿变速箱, 操作方便, 能效优异。

进口泵阀 Imported Multil-way Valve & Booster



- Adopted imported components in crucial places greatly enhance reliability. 在关键位置采用进口部件, 大大提高了可靠性。

可选配置 Optional Attachment

- 轮胎Tyre size: 13.00-24-12PR G-2
- 自动找平仪Automatic leveling device
- 防滚翻ROPS Frame
- 推土板Front Blade
- 前松Scarifier
- 后松Ripper



前松Scarifier

- 齿数No. of teeth 11
- 松土宽度Digging width 1325mm
- 最大离地间隙Max. lift above ground 344mm
- 松土深度Digging depth 212mm

后松Ripper

- 齿数No. of shanks 3 (max.5)
- 最大松土深度Max. digging depth 436mm
- 最大离地间隙Max. lift above ground 611mm
- 最大松土宽度Max. digging width 2196mm

推土板Front Blade

- 宽度Blade width 2501mm
- 最大离地间隙Max. lift above ground 579mm
- 最大刮削深度Max. grading depth 125mm