

# ZOOMLION TRUCK CRANE ZTC550V532-2



**ZOOMLION**

**Zoomlion Heavy Industry Science & Technology Co.,Ltd.**

Add: No.677, Lugu Road, Zoomlion Industrial Park, Changsha, Hunan, China, 410205

Copyright©2023 Zoomlion. All rights reserved. Reproduction and copying of any part of contents is not allowed for any purposes without Zoomlion's approval.



Product specifications are subject to change without notice and obligation. The photographs and/or drawing in this document are for illustrative purposes only. Please consult your local ZOOMLION dealer for more information.  
website:en.zoomlion.com 2023.08.14

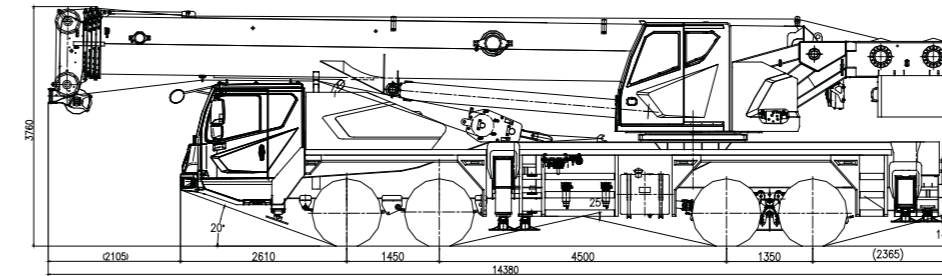
**ZOOMLION**

**4.0**  
PRODUCTS

# CONTENTS

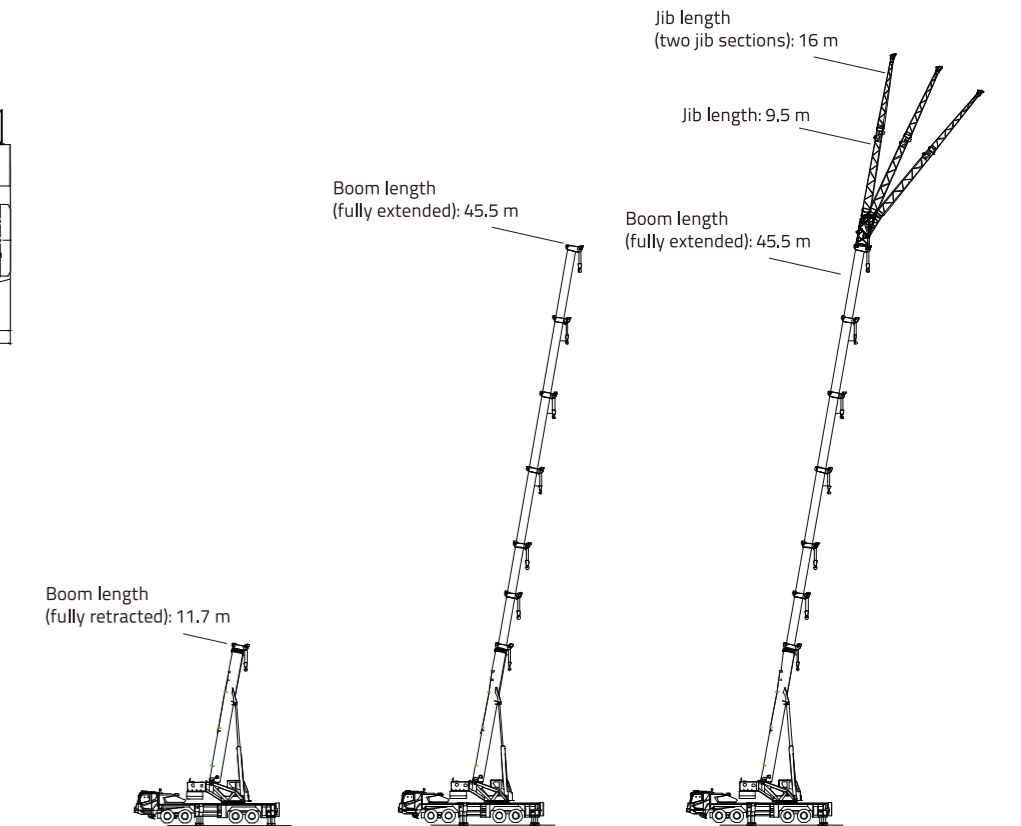
DIMENSIONS .....	2
BOOM/JIB COMBINATION .....	2
CRANE AND COMPONENT WEIGHTS .....	3
LIFTING HEIGHT CURVE .....	3
LIFTING CAPACITY TABLES .....	4-5
TECHNICAL SPECIFICATIONS .....	5
MAIN TECHNICAL PARAMETERS .....	6

## DIMENSIONS



## BOOM/JIB COMBINATION

Working Condition	Boom/Jib Length
Boom	11.7-45.5m
Boom+jib section 1	Boom 45.5m+(jib section 1) 9.5m
Boom+jib section 1 + jib section 2	Boom 45.5m+(jib section 1 + jib section 2) 16m



## CRANE AND COMPONENT WEIGHTS

Axle	1	2	3	4	Total weight
T	7.35	7.35	13	13	40.7

### Hook Detailed Description

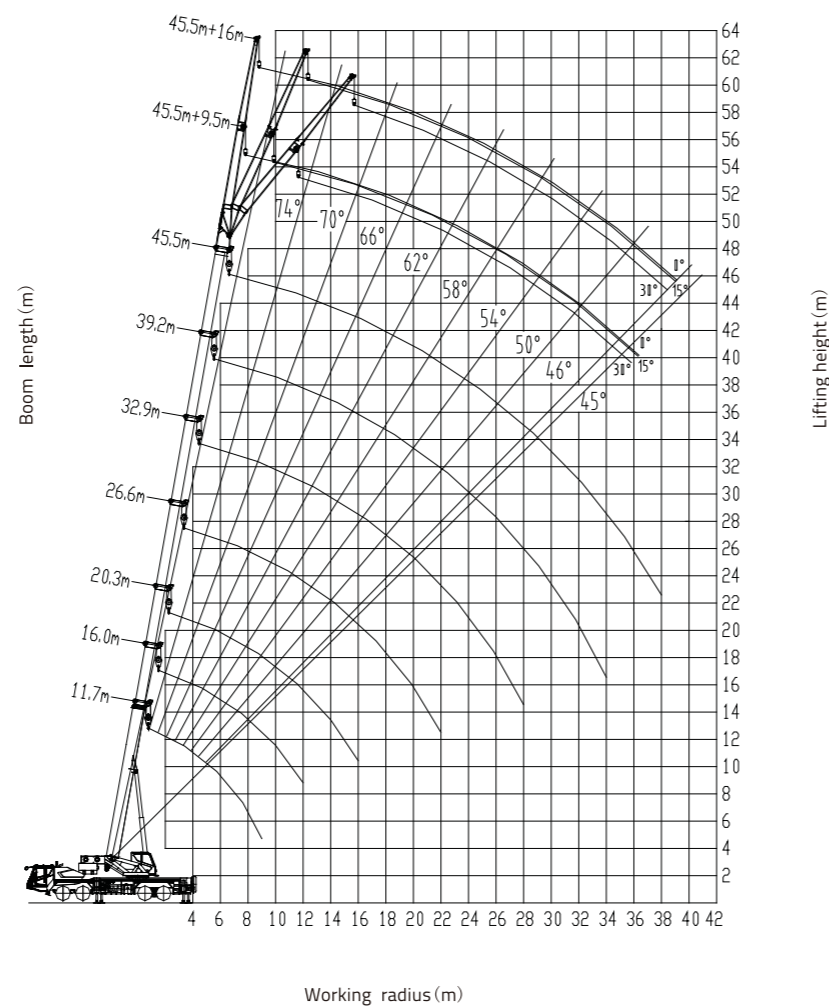
Hook Load T	No. of Sheaves	No. of Lines	Weight Kg	Remark
55	6	11	510	Standard
4	/	1	90	Standard

### Working Speed

12R22.5-18PR	km/h MAX.	50	9 / R
	80		

Drive	Operation Speed	Rope Diameter/length	Max. Single Line Pull
	140m/min	Φ17mm/210m	5t
	140m/min	Φ17mm/130m	5t
	0-2.6r/min		
	43/100s		
	90/95s		

## LIFTING HEIGHT CURVE



## LIFTING CAPACITY TABLES

Working radius (m)	Main boom (m)														
	Telescopic cylinder I fully extended, outriggers fully extended, over side or rear working area							Telescopic cylinder I intermediately extended, outriggers fully extended, over side or rear working area				Telescopic cylinder I fully retracted, outriggers fully extended, over side or rear working area			
	11.7	16	20.3	26.6	32.9	39.2	45.5	22.3	28.6	34.9	41.2	18	24.3	30.6	36.9
3	55.0*	42.0	31.0												
3.5	48.0	41.0	31.0												
4	43.0	40.0	31.0									25.0			
4.5	38.5	38.0	30.0	25.0				25.0				25.0	22.0		
5	36.0	35.5	29.0	25.0				25.0	21.0			25.0	22.0	15.0	
5.5	32.5	32.0	28.0	25.0	20.5			25.0	21.0			24.0	22.0	15.0	
6	29.5	29.0	26.0	24.5	20.5			24.0	21.0	14.5		23.5	22.0	15.0	
7	25.0	24.5	23.5	22.5	20.0	14.0		23.5	21.0	14.5		23.0	21.5	15.0	10.5
8	21.5	21.0	20.5	20.5	18.0	14.0		21.5	21.0	14.5	10.0	22.0	20.0	14.0	10.5
9	18.0	18.0	18.0	18.0	16.5	14.0	9.60	19.0	19.0	14.2	10.0	19.5	19.0	13.0	10.5
10		16.0	15.7	16.0	15.1	13.0	9.60	17.0	17.0	13.3	9.80	17.0	17.5	12.0	10.0
11		13.4	13.0	14.2	13.8	12.0	9.60	14.5	15.5	12.4	9.50	14.0	16.0	11.2	9.5
12		11.4	11.2	12.2	12.8	11.1	9.10	12.5	13.2	11.5	9.10	13.0	13.8	10.4	8.9
13			9.20	10.5	11.2	10.3	8.90	10.8	11.5	10.7	8.60	11.0	12.0	9.7	8.3
14			8.10	9.10	9.75	9.65	8.50	9.50	10.1	10.0	8.30	10.0	10.6	9.10	7.70
15			6.60	7.80	8.50	9.00	8.00	8.30	8.90	9.30	7.80		9.40	8.50	7.20
16			6.00	7.00	7.60	8.05	7.50	7.30	7.95	8.30	7.30		8.40	8.00	6.80
18				5.45	6.05	6.50	6.70	5.70	6.35	6.75	6.50		6.80	7.10	6.00
20				4.25	4.85	5.25	5.55		5.15	5.50	5.80		5.60	5.90	5.40
22				3.30	3.90	4.30	4.60		4.20	4.60	4.85			5.00	4.90
24					3.10	3.50	3.80		3.40	3.80	4.10			4.20	4.45
26					2.50	2.85	3.15			3.15	3.45			3.50	3.80
28					1.95	2.35	2.60			2.65	2.90				3.25
30						1.90	2.15			2.15	2.45				2.75
32						1.50	1.80				2.05				2.35
34						1.15	1.45				1.70				
36							1.15								
I(m)	0	4.3	8.6	8.6	8.6	8.6	8.6	4.3	4.3	4.3	4.3	0	0	0	0
II(m)	0	0	0	6.3	12.6	18.9	25.2	6.3	12.6	18.9	25.2	6.3	12.6	18.9	25.2
Reeving	11	9	8	6	5	4	3	6	5	4	3	6	5	4	3
Hook	55t														

Note: The values in column "I" refer to the extendable length of telescopic cylinder I  
The values in column "II" refer to 3 times extendable length of telescopic cylinder II  
\* when lifting load > 50t, the reeving is 11, special device will be installed.

## LIFTING CAPACITY TABLES

Unit: t

Boom angle (°)	Main boom(m) + Jib(m)					
	45.5+9.5			45.5+16		
	0°	15°	30°	0°	15°	30°
80	4.00	2.80	2.00	2.50	1.60	1.20
78	3.80	2.60	1.90	2.40	1.50	1.10
76	3.60	2.40	1.80	2.20	1.40	1.05
74	3.30	2.25	1.75	2.00	1.35	1.00
72	3.00	2.10	1.70	1.85	1.30	0.95
70	2.70	2.05	1.60	1.70	1.20	0.95
68	2.50	1.95	1.60	1.60	1.15	0.90
66	2.40	1.85	1.55	1.50	1.10	0.90
64	2.20	1.75	1.45	1.40	1.05	0.85
62	2.10	1.65	1.40	1.30	1.00	0.85
60	2.00	1.60	1.35	1.20	0.95	0.80
58	1.80	1.50	1.30	1.15	0.90	0.80
56	1.65	1.45	1.20	1.10	0.85	0.80
54	1.45	1.35	1.15	1.00	0.80	0.75
52	1.25	1.20	1.10	0.95	0.80	0.70
50	1.05	1.00	1.00	0.85	0.75	0.65
45	0.65	0.60	0.60			
Reeving	1					
Hook	4t					

## TECHNICAL SPECIFICATIONS

### Crane Superstructure

<b>Main boom</b>	The box-shaped boom consists of 5 U-type boom sections made of low-alloy high-strength steel plate. Main boom length: 11.7m-45.5m.
<b>Jib</b>	2 section lattice jibs(9.5m,16m), offset: 0°, 15°, 30°.
<b>Winch</b>	Main winch and auxiliary winch with variable displacement piston motors and planetary reducers.
<b>Electrical system</b>	Two-wire system, 24 Volt DC.
<b>Operator's cab</b>	The cab with spacious room and man-machine friendly layout offers a comfortable operating experience, AC and heater.
<b>Safety devices</b>	Automatic load moment limiter, warning light, limit switch, Relief valve, Hoisting limit switch etc.
<b>Counterweight</b>	6.8T counterweight.
<b>Hydraulic system</b>	The open-type hydraulic system adopts advanced pilot-operated proportional joysticks and hydraulic proportional control system. Hydraulic tank: 700L.
<b>Derricking mechanism</b>	1 front-mounted hydraulic cylinder with balance valve provides the boom with smooth derricking movements from -2° to 80°.
<b>Slewing mechanism</b>	Via the planetary gear reducer, the axial plunger hydraulic motor drives the pinion gear on the output shaft to rotate the toothed ring of slewing bearing fixed on chassis frame, providing superstructure with 360° unlimited slewing.

### Crane Carrier

<b>Outrigger</b>	2 stage H-type outriggers with wide spread 6.3m(L)*8m(W).
<b>Engine</b>	YCK10360-30, Rated power: 265KW, max. torque 1600N*m. Fuel tank: 300L.
<b>Driver's cab</b>	Modern and luxury driver's cab with man-machine friendly layout offers a comfortable operating experience. AC and heater.

## MAIN TECHNICAL PARAMETERS

Item		Value	Remarks
Working performance	Max. rated lifting capacity	kg	55000
	Max. load moment of basic boom	kN.m	1764
	Max. load moment of max. length main boom	kN.m	1182
	Max. lifting height of basic boom	m	12.7
	Max. lifting height of main boom	m	46
Working speeds	Max. hoist rope speed (main winch)	m/min	140
	Max. hoist rope speed (auxiliary winch)	m/min	140
	Boom derricking up time	s	43
	Boom telescoping out time	s	90
Driving	Slewing speed	r/min	0~2.6
	Max. working altitude	m	2000
	Max. driving speed	km/h	80
	Max. gradeability	%	50
	Min. turning diameter	m	≤24
	Min. ground clearance	mm	272
Mass	Oil consumption per hundred kilometers	L	39
	Deadweight in driving condition	kg	40700
	Complete vehicle kerb mass	kg	40570
	Front axle load	kg	14700
Dimensions	Rear axle load	kg	26000
	Overall dimensions (L×W×H)	mm	14380×2800×3760
	Outrigger spread (L)	m	6.3
	Outrigger spread (W)	m	Completely extended: 8.0 Intermediately extended: 5.26
	Tail slewing Radius	mm	4280
	Main boom length	m	11.7-45.5
	Boom angle	°	-2-80
	Jib length	m	9.5、 16
Offset	°	0、 15、 30	